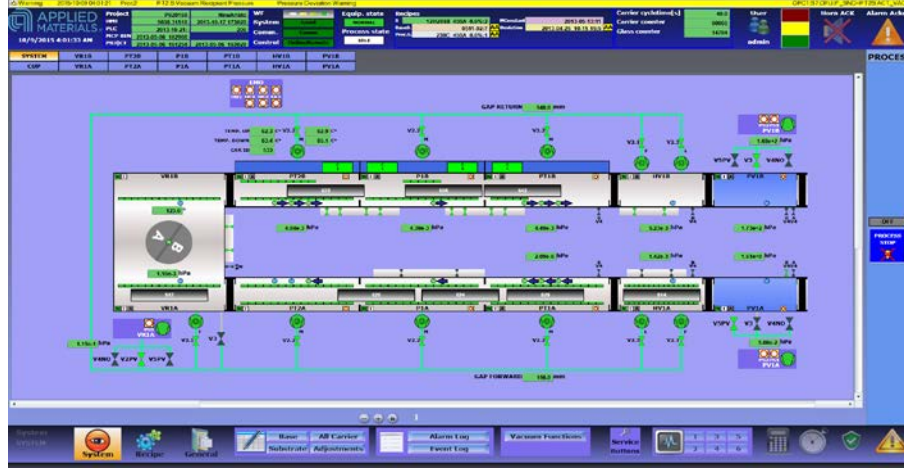


Owner Bes Phatelet Tech LTD
Vintage 2013

Date:12/26/2017

Type: G6 LCD PVD

Process	機台	廠商	型號/型式	出廠年分	基板尺寸	機台尺寸	數量	電壓	二次配	Tact Time	
ThinFilm	ROBOT	MANZ	H067 Revision 03	2,013	730*920	5000x4500x3600		220V	CDA VAC	22 Sec	
	SPT	AKT	NAR1800 AF-20121118-YP-r2	2,013	730*920					CDA PCW AR O2 N2	22 Sec
			Entrance chamber SN		730*920	1950x1200x3036	4	400V			
			N chamber		730*920	1950x1200x3036	4	400V			
			RoCa chamber		730*920	2900x1200x3036	6	400V			
R chamber	730*920	2400x1600x3500	1	400V							



彩源科技股份有限公司
Bes Phatelet Tech LTD
新竹縣竹北市縣政十街72號2樓
2F., No.72, Xian-Zheng
10th St., Chu-Pei City,
Hsinchu County 30251,
Taiwan (R.O.C.)
tel:+886-35584999

